

# Airwell

*Just feel well*

## User manual

### RCW25 Remote control wired

*English Manual*



#### **IMPORTANT NOTE**

Read this manual carefully before installing or operating your new air conditioning unit. Make sure to save this manual for future reference.

20.AW.RCW25.UM.EN.FR.07.23

# Wire Controller Manual

Figure Number:  
Material Code:

pls read this manual carefully before installation and install according to the instruction

## I. Use-method

The control panel of wire controller is responsible for controlling the operation status of the system by the button and displaying the working status of the entire system by its LCD screen, and is responsible for communicating with the control board of the system.



Fig1 Appearance of Wire Controller

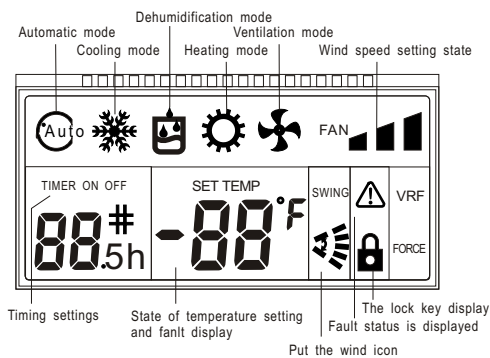


Fig2 LCD display content of Wire Controller

### Operation and Instruction:

#### "ON/OFF" Button (ON/OFF) :

Control the On/Off status of the system.

#### "MODE" Button (MODE) :

When the air conditioning is powered on, every time you press mode button or the mode button of remote controller, the mode will change in the following sequence.

Auto Mode→Refrigeration→Dehumidification→Heating→Ventilation→Auto Mode

#### "TEMP+" and "TEMP-" Button (TEMP+ and TEMP-) :

1) Boot state, press "TEMP+" and "TEMP-" Button, increase/decrease the setting temperature. Refrigeration, Dehumidification, Ventilation and Heating mode Scope of temperature setting: 12 °C ~ 28 °C The setting temperature do not adjust in Auto Mode

2) Press the "TEMP+" and "TEMP-" button for 3s simultaneously to lock this button. At this time, It will display the locking icon in LCD.

Deactivate this button, and press the "TEMP+" and "TEMP-" button again simultaneously.

#### "TIMER" Button (TIMER) :

Set Timing On or Timing Off. The wire controller to set the time range as 1-24h.

1) Press the Timer button in the Off status to go into the Timing On for 1 hour, and then press the Timer button plus 1 until it is timing on for 24h. At this time, if you press the Timer button, it will deactivate Timing On.

2) Press the Timer button in the On status to go into the Timing Off for 1 hour, and then press the Timer button plus 1 until

it is timing off for 24h. At this time, if you press the Timer button, it will deactivate Timing Off.

#### "FAN" Button (FAN) :

1) The Fan Speed button is valid in the "Cooling mode", "Heating mode" and "Ventilation mode".

2) Press the Fan Speed button of the wire controller or the Volume button of the remote controller in the Cooling mode, Heating mode or Ventilation mode, and the volume changes as follows:

High speed d → Middle speed d → Low speed d → Auto wind

3) There is no Auto wind in the Ventilation mode, and the volume changes as follows:

High speed d → Middle speed d → Low speed d

#### "SWING" Button (SWING) :

1) Press it to display the Swing icon. The Swing icon will swing back and forth.

2) Press the Swing button, and the upper and lower wind deflectors will swing within the specified range automatically, and the left and right wind deflectors will swing within the specified range automatically, and press it again to stop the swing.

#### "26°C/CHECK" Button (26°C/CHECK) :

1) Short press this button, Enter a state of energy saving of 26 °C, namely the setting temperature is 26 °C. This function under the boot of Refrigeration and Heating mode is effective.

2) Long press this button, will enter the query condition. It will exit the query condition, when you press this button again and do not operate for five seconds in the condition of the query.

By pressing "TEMP+" and "TEMP-" Button to check the current state of indoor unit in the query condition. The first time is to display the address and model HP of the indoor unit, the second time is to display the address and the power consumption of the indoor unit, the third time is to display the address of the indoor unit and T1 temperature, the fourth time is to display the address of the indoor unit and T2 temperature, the fifth time is to display the address of the indoor unit and T2B temperature, the sixth time is to display the address of the indoor unit and T2 average temperature, the seventh time is to display the address of the indoor unit and opening of expansion valve, and recovery the main page status for the eight time.

#### Description of DIP Switch :

	ON	OFF
4	with power failure memory	without power failure memory

1) The first, second, third bit of the DIP Switch is no meaning. The factory all dial to the OFF state.

2) The fourth bit ON of the DIP switch indicates it is With Power Failure Memory function, and the fourth bit OFF indicates it is Without Power Failure Memory function. The factory dials to the OFF state.

## II. Installation of Wire Controller

### Safety Precautions

- ! Read the safety precautions carefully before installation.
- ! The following is the important content to be paid for the safety, be sure to follow it.
- ! The meaning of each part:

**Warning:** Indicate it may cause the death or serious injury for the improper operation.

**Note:** Indicate it may cause the death or serious injury for the improper operation.

### Notes:

- Please do not install the wire controller in damp or direct sunlight places.
- Please do not hit, throw and frequent disassembling the wire controller.
- Please do not operating the wire controller with Wet hand ; Don't make any fluid into the wire controller .
- Please do not do dismantling the wire controller without authorization. Please consult after-sales maintenance personnel if you have a problem .
- To prevent water and dust into the wire controller, Affect the wire controller normal use. Please dismantle the wire controller When the indoor decoration and maintenancee .

### Installation and disassembly of the wire controller

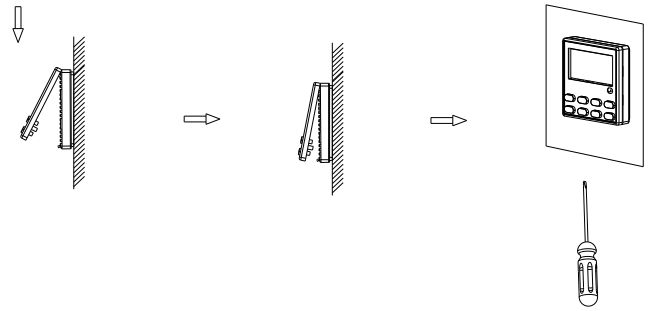
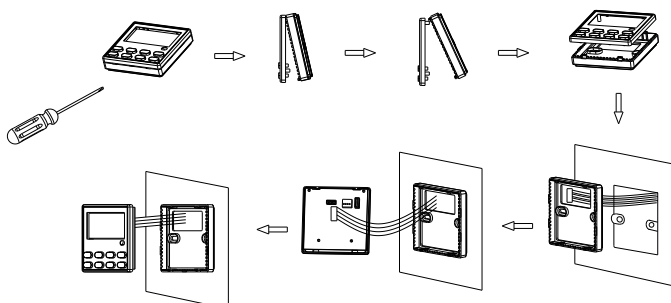
#### 1. The installation position and requirements of the wire controller

- 1) Please do not install the wire controller in damp or direct sunlight places.
- 2) Please do not install the wire controller in the places, where is near the high temperature or easy to splash water.
- 3) To avoid the interference of the neighbors' remote controller which has the same model , then cause abnormal work. Please do not install the wire controller where the face up to the window.
- 4) Before installation , please cut off the power which is Buried in the wall mounting holes. The whole installation process does not allow operation with power.
- 5) In order to avoid the unit by reason of electromagnetic interference caused by abnormal work . When wiring , please pay attention to the following matters.
  - A) Ensure that communication line access right, otherwise will lead to communication failures.
  - B) If the air conditioning unit is installed on the places , which is influence by electromagnetic interference . the wire controller signal lines must use shielded twisted-pair cable .
- 6) The standard accessories which is installation need to prepare : installed inside a wall socket bottom box, controller base plate, screw the M4 x 25, control panel.

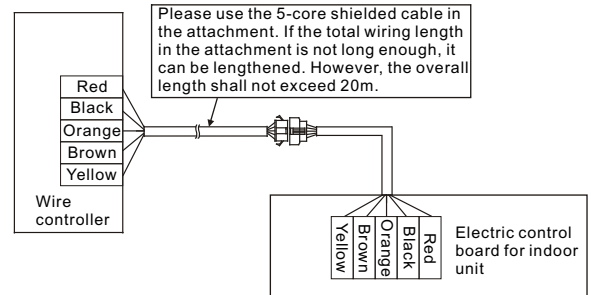
#### 2. The installation of the wire controller

First of all, the wire controller signal line connection mode is as follows:

- 1) Open interior electrical lifted the lid, and the signal wires through the rubber ring;
- 2) Plug the wire controller signal lines within the five core needle base on the indoor machine circuit boards, and using cable tie line tied tightly fixed. Next, the wire controller installation steps as shown in the figure below:



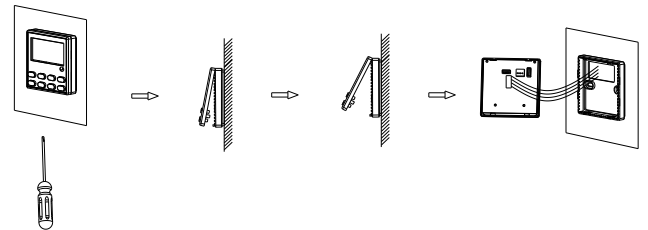
Connect the wire controller in the way as shown in the figure below



Brief description of the installation process is as follows:

- 1) The signal lines of short through rectangle hole of the wire controller bottom plate, and then pull out five core twisted pair from the wall installation hole. Finally connect the line and the other end.
- 2) Use screws M4 x 25 to fix the controller base plate on the mounting holes of the wall.
- 3) Put the wire controller panel and floor buttons together, and this installation is complete. When installation, please reserve a certain length of the line at the bottom of box, to facilitate maintenance later removed.

#### 3. Disassembly of the wire controller



! After the completion of the installation, confirm there is no abnormality for the commissioning, and deliver the instruction to customers for storage.

### Note:

- It may cause the rear cover deformed if the screw is tightened too much.
- It is necessary to reserve a certain length for the connecting cable of the wire controller during the installation, so as to take down the wire controller for the maintenance.